

Adjustments

As the positioning and tension of a pelvic belt is extremely important to achieve its intended purpose, care should be taken to fit the belt in the most appropriate position for the user.

Incorrect tension, i.e. too tight, can result in unnecessary discomfort or distress to the User. Whereas, having a belt that is too loose can allow the user to move out of position. This could also allow the buckle release catch to come into contact with a more rigid piece of clothing, e.g. a large button or belt buckle, which in turn could inadvertently operate the release catch on the belt. Should the user show continued signs of discomfort or distress due to the Freedom belt a suitably qualified healthcare professional should be consulted immediately.

User / Carer Information - Please Read Before Use

- Straps or Harnesses should be the last item to be released or removed before the user leaves the wheelchair and the first things to be secured after entering. Do not move around with the belt unfastened.
- Daily inspection of the belt is recommended. If any defects are found, please DO NOT use the belt and contact the manufacturer.
- The Freedom belt length may require adjustment periodically, to allow for user growth, changes to user's disability or changes in seasonal clothing. The Freedom belt can be adjusted by selecting a different fixing hole. Extender Plates are available from Active Hands that increase the length by 120mm per side.
- Incorrect adjustment could lead to distress and pressure injury, please check the occupant for signs of discomfort and redness, bruising or sores around the contact area with the belt.
- The buckle and padding can be wiped down with a damp cloth with a mild detergent and warm water. Do not machine wash. Do not submerge the buckle in water. If water or other liquid does enter the main body or stud parts of the buckle, allow to drain and dry for 24 hours in a warm ventilated place. Please note that while external water may dry quickly, the internal compartments of the unit will take longer to dry.
- If badly soiled, the FlexiFix arms can be removed from the wheelchair and the padding covers removed and washed. We recommend that the arms are refitted by a wheelchair fitting professional, should you need to do this. The padding can be washed in a washing machine at 40°C on a synthetics cycle.
- Inspection before use of the product is recommended to ensure the function of the buckle is working correctly. Test that the Release Button/Pull Tab opens and closes without obstruction and the unit closes without any additional force. Reposition the buckle on the Velcro pad if the pull tab is catching on the padding.
- Ensure the Stud enters the main unit without excess force. The connection of the two units is assisted with internal magnets so no additional force is required once the two parts are brought together. If the magnets do not pull the buckle parts together, check that no debris has accumulated inside the body opening, and check the stud to see if any dirt is fouling the end of the product which may restrict the unit's connection. To remove any debris please wipe the stud with a cloth or use a soft tool, such as a cotton bud, to remove debris stuck in the stud entry point on the buckle.

**The Active Hands Company - Unit 4, Rumbush Farm Business Park, 322A
Rumbush Lane, Earlswood, Solihull B94 5LW, UK**

tel: +44 (0)1564 702 255

email: soloc@activehands.com

www.activehands.com

Tested to: ISO 9001
ISO 16840-3
ISO 16840-10



Warnings

- The Freedom Belt is designed for postural positioning and/or safety only, not as a method of restraint.
- UNDER NO CIRCUMSTANCES should the Freedom Belt be used as the sole method of securing the User in a wheelchair, during transportation in a motor vehicle. When transporting an occupant in a wheelchair, in a mobility vehicle, a suitable 4-point tie down restraint (WTORS) system with a suitable, separate 3-point passenger restraint must be used to ensure the occupant is safe during transportation.
- This Freedom Belt should be prescribed and installed by a suitably qualified healthcare professional, giving the necessary consideration to positioning, strap routing and correct adjustment. The belt should only be worn by the user for whom it has been fitted.
- Achieving the correct tension is extremely important - see Adjustments section.
- The Freedom Belt with Soloc buckle is intended for a single occupant whose mass does not exceed 100kg.
- Do not modify or tamper with the Belt or Buckle in any way.
- We recommend that the belt's function is checked before use - see 'User / Carer Information' below.
- The buckle uses magnetic fields to engage and attract the parts together. Please make sure this does not affect magnetically sensitive devices. The buckle should be located at least 50mm from a pacemaker or other electronic device.
- Please record the batch WOR number from the packaging onto your user records for traceability.

Part Identification





Soloc Freedom - SFree User Manual



How to Operate the Freedom Belt

The Freedom belt has been designed to be used by those with little to no hand function or by those with a Limb Difference.

To close the belt push down on the FlexiFix arm that is connected to the main body of the buckle. Then push down on the other FlexiFix arm so that the stud locates in the cavity of the main body. The magnetic system should draw the two parts together to make a physical connection. **Please note that on closure a physical connection is made, the magnets only assist with connecting the belt.**

The red release tab must have moved back from the release position for buckle to be secured. There should be no gap between the red release tab and the buckle.

To open the buckle, either press against the release button or pull on the Pull Tab, depending on your hand function.

Ensure that the padding on the buckle side is not catching on the Pull Tab and holding it open. The buckle is held in place with Velcro and this can be pulled apart and repositioned to ensure the pull tab is not catching. You may also need to pull the padding down the FlexiFix arm if using it on the smallest setting.

Fitting the Freedom Arms to Your Wheelchair

We recommend getting your belt fitted by a professional wheelchair fitter. Please ensure that you have permission from the wheelchair owner before fitting the belt.

Initially, the installer will need to establish the most suitable position for the Freedom belt to be attached, according to the User's disability and type of wheelchair. It is recommended that this is carried out with the User seated in the wheelchair and the Freedom Belt positioned around the User in the intended position.



The FlexiFix arm should be fitted so that the buckle and stud are the correct way up when closed.

The Freedom arms have several fixing holes along the bottom section. Position the arms so that the buckle will sit in a central position on the user. Then use the closest hole to fix the arm to the wheelchair. Extender plates are available if the arm is not long enough. Please note that only one extender plate should be used on each side of the belt.

The FlexiFix arm can be attached by fixing directly to any fixing holes in the frame.

To attach the FlexiFix arm to a wheelchair that doesn't have existing holes, use a frame saver clamp. These can be purchased separately from Active Hands.

Fig 1



Fig 2



Fig 3



Shim for 22mm Ø frame

To fit the frame saver clamp, measure the diameter of your wheelchair frame where you wish to mount the belt. For a 25mm frame, use the outer ring only. For a 22mm frame you will need to insert the shim shown in Figure 1.

If you are using the shim, insert it into the ring (Fig 2) with the split at the top. Push the ring over your wheelchair frame where you wish to fix the belt. Put the M6 screw (included) through the hole you have chosen in the FlexiFix arm, and into the top of the frame saver clamp (Fig3). When you are happy with the position, tighten the screw.

The Freedom belt does not have any adjustment in the belt length at the buckle end. It is likely that the intended user would not have the mobility to tighten any such straps. The benefit of the Freedom is that it can be used independently by those with very poor hand function or even those with no hands. The fixed length has the benefit that the user has to sit in the correct position so that they can do up the belt - this prevents poor posture or slouching of the user once the desired position has been established by a qualified wheelchair fitter.



Soloc Freedom - SFree User Manual

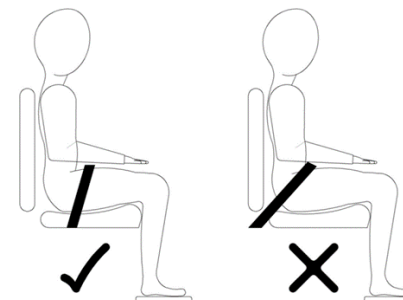


Fitting an Extender Plate to a FlexiFix Arm

If the FlexiFix arm is not long enough for your client an Extender Plate can be added to increase the length up to 120mm per side.

The Extender Plate should be attached to the FlexiFix arm in two locations using the bolts, washers and nuts provided. One washer should sit under the head of the bolt and the other should be added before the nut.

The Extender Plate can then be fitted to the wheelchair using the instructions above (Fitting the Freedom Arms to Your Wheelchair).



The belt should be placed in such a way that it stops the pelvis sliding forwards. To achieve this, it shall be attached such that the belt falls anterior to the greater trochanters as shown in the left-hand diagram, above.

More information on postural support fixation and placement can be found in BS 8625:2019

Houdini Locking System

A Houdini locking system is built into every Soloc Buckle. This feature allows the unit to be locked so that the user cannot open it themselves, if required.

The buckle can be locked by inserting a screw underneath the logo sticker - this prevents the release button or pull tab from being pulled.

To release a user from their belt, a Houdini Release Cover can be placed over the buckle. The Houdini release cover uses carefully placed magnets that release the internal locking mechanism. This method is more secure than other examples of locking mechanisms, such as covers, and prevents locking mechanism tampering or release with tools that are not the intended release tool.

Please ensure that the Houdini release cover is kept nearby in case of an emergency. A suitable location might be attached to the back of the user's wheelchair (out of their reach) or worn by a carer or staff member.