

Adjustments

As the positioning and tension of a pelvic belt is extremely important to achieve its intended purpose, care should be taken to ensure that all straps are appropriately adjusted with any belt padding suitably positioned.

Incorrect tension, i.e. too tight, can result in unnecessary discomfort or distress to the User. Whereas too loose, can allow the belt to roll upwards or downwards thus not achieving its intended purpose. An incorrectly fitted belt could also allow the buckle release catch to come into contact with a more rigid piece of clothing (e.g. a large button or belt buckle) or to snag on the padding, which could inadvertently operate the release catch on the Belt. Should the User show continued signs of discomfort or distress due to the Connect Belt, a suitably qualified healthcare professional should be consulted immediately.

User / Carer Information - Please Read Before Use

- Straps or Harnesses should be the last item to be released or removed before the user leaves the wheelchair and the first things to be secured after entering. Do not move around with the belt unfastened as it may get caught in the wheels and become damaged.
- Daily inspection of the belt is recommended. If any defects are found, please DO NOT use the belt and contact the manufacturer.
- The Connect Belt length may require adjustment periodically, to allow for user growth, changes to user's disability or changes in seasonal clothing. Small adjustments to belt or strap lengths can be made at the main buckle, with further adjustment available at the Tri-Slot Wheelchair Mounting Plates, located at each anchored end of the Belt.
- Incorrect adjustment could lead to distress and pressure injury, please check the occupant for signs of discomfort and redness, bruising or sores around the contact area with the belt.
- The buckle and webbing belts can be wiped down with a damp cloth with a mild detergent and warm water. Do not machine wash. Do not submerge the buckle in water. If water or other liquid does enter the main body or stud parts of the buckle, allow to drain and dry for 24 hours in a warm ventilated place. Please note that while external water may dry quickly, the internal compartments of the unit will take longer to dry.
- Removable padding can be washed in a washing machine at 40°C on a synthetics cycle.
- Inspection before use of the product is recommended to ensure the function of the buckle is working correctly. Test that the Release Button/Pull Tab opens and closes without obstruction and the unit closes without any additional force. Reposition the buckle if the pull tab is catching on the padding.
- Ensure the Stud enters the main unit without excess force. The connection of the two units is assisted with internal magnets so no additional force is required once the two parts are brought together. If the magnets do not pull the buckle parts together, check that no debris has accumulated inside the body opening, and check the stud to see if any dirt is fouling the end of the product which may restrict the unit's connection. To remove any debris please wipe the stud with a cloth or use a soft tool, such as a cotton bud, to remove debris stuck in the stud entry point on the buckle.

The Active Hands Company - Unit 4, Rumbush Farm Business Park, 322A
Rumbush Lane, Earlswood, Solihull B94 5LW, UK

tel: +44 (0)1564 702 255

email: soloc@activehands.com

www.activehands.com

Warnings

- The Connect Belt is designed for postural positioning and/or safety only, not as a method of restraint.
- UNDER NO CIRCUMSTANCES should the Connect Belt be used as the sole method of securing the User in a wheelchair, during transportation in a motor vehicle. When transporting an occupant in a wheelchair, in a mobility vehicle, a suitable 4-point tie down restraint (WTORS) system with a suitable, separate 3-point passenger restraint must be used to ensure the occupant is safe during transportation.
- This Connect Belt should be prescribed and installed by a suitably qualified healthcare professional, giving the necessary consideration to positioning, strap routing and correct adjustment. The belt should only be worn by the user for whom it has been fitted.
- Achieving the correct tension is extremely important - see Adjustments section.
- The Connect Belt with Soloc buckle is intended for a single occupant whose mass does not exceed 100kg.
- Do not modify or tamper with the Belt or Buckle in any way.
- We recommend that the belt's function is checked before use - see 'User / Carer information' below.
- The buckle uses magnetic fields to engage and attract the parts together. Please make sure this does not affect magnetically sensitive devices. The buckle should be located at least 50mm from a pacemaker or other electronic device.
- Please record the batch number from the packaging onto your user records for traceability.

Part Identification



How to Operate the Buckle

To close the buckle, simply place the stud near to the main body of the buckle. The magnets inside will help it to close. Please note that on closure a physical connection is made, the magnets only assist with connecting the belt.

The red release tab must have moved back from the release position for buckle to be secured. There should be no gap between the red release tab and the buckle.

To open the buckle, either press against the release button or pull on the pull tab.

How to Adjust the Belt

The Connect belt can be adjusted by pulling away from the buckle with the D-ring. The D-ring is large enough to fit one or two fingers in to aid with tightening. This allows for a small amount of adjustment to accommodate changes in clothing. The belt should be fitted so that only a small adjustment is required.

To increase the belt length, pull the unfastened Stud away from the body. This should allow the webbing belt to feed through the Metal Adjustment Buckle.

How to Position the Padding (optional)

The Connect Belt can be purchased with optional padding. The padding comes in two sections: a simple sleeve that fits over the stud side of the belt, and a sleeve with a flat padding section that sits under the buckle. Slide the padding on to the belt before attaching it to the wheelchair.

Buckle-side padding: The Buckle is held in place on the padding by Velcro – there is a looped Velcro circle on the back of the buckle and a hook Velcro patch on the padding. Please ensure that the buckle is positioned so that the Pull Tab does not snag on the padding. The buckle should be free to open and close without catching - failure to ensure this may result in the belt staying open and harm occurring to the occupant. If the Pull Tab does catch on the padding, adjust the position of the buckle further away from the edge of the padding and pull the padding down the belt.

The padding should cover all of the area where your body meets the belt. If it does not, you may need a longer length of padding (600mm and 800mm lengths available).

Fitting the Connect to Your Wheelchair

We recommend getting your belt fitted by a professional wheelchair fitter. Please ensure that you have permission from the wheelchair owner before fitting the belt.

Initially, the installer will need to establish the most suitable position for the Connect Belt to be attached, according to the User's disability and type of wheelchair. It is recommended that this is carried out with the User seated in the wheelchair and the Connect Belt laid around the User in the intended position.

The belt length can be adjusted using the Tri-Slot Wheelchair Mounting Plate (Tri-Plate). Any excess belt can be held in place with the plastic Tri-Glide.

Fig 1



Fig 2



Fig 3



Fig 4



First put the belt through the tri-glide by inserting it up through one slot and down the other (Fig 1) and sliding it along the belt. Determine the length of the belt that is suitable for the user, then fit the tri-plate. Insert the belt into the first slot from the back of the plate. Then through the second slot from the front of the tri-plate (Fig 2) and back through the third slot (Fig 3). The belt can then be pushed into the first slot again, this time from the front of the plate (Fig 4). Once pulled tight, this will hold the belt securely in place. The end of the belt can then be slotted through the Tri-Glide to tidy up the ends and prevent the excess belt being caught in the wheels.

The Connect comes with a Tri-Slot Wheelchair Mounting plate (tri-plate) as standard with a fixing hole and corresponding bolts and washers. If the wheelchair has holes already in the frame, the included bolts can be used to attach the tri-slot plate to the chair.

A wheelchair frame clamp is available from Active Hands. This clamp attaches to the tri-slot plate and allows the Connect to be fixed around the frame of the wheelchair.

Fitting the Connect to Your Wheelchair cont.

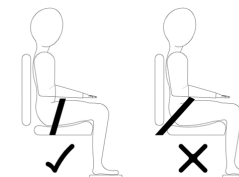


Fig 1



Fig 2

To use the frame clamp, slide the small curved section into the slot on the tri-slot plate (Fig 1) and pull down to fix it into place (Fig 2). Put the protective strip of rubber onto the frame where the belt will be attached. Place the frame clamp over the rubber and tighten the bolt to secure the fixing.



The belt should be placed in such a way that it stops the pelvis sliding forwards. To achieve this, it shall be attached such that the belt falls anterior to the greater trochanters as shown in the left-hand diagram, above.

More information on postural support fixation and placement can be found in BS 8625:2019

Fitting the Buckle to the Belt

Your belt will come attached to the buckle. If you need to change the belt, or remove it for cleaning, it can be reassembled in this way:

The buckle side of the webbing belt is sewn to the buckle – do not remove this side.

The stud side of the belt is the adjustable side so has a Metal Adjustment Buckle with a Plastic Adjustment Controller on it. Insert the end of the belt into the first slot (furthest from the stud) from the underside of Metal Adjustment Buckle, pass the belt over the Plastic Adjustment Controller and down into the second slot (closest to the stud). Pull the belt through until the D-ring touches the loop plate. Ensure that the stud is orientated so that the 'v' shape is facing upwards.



To ensure this buckle functions correctly, there are limitations in the belt thickness that can be safely used with the Soloc buckle. The thickness of the belt material to be used is from 1.1mm to 1.3mm.

Houdini Locking System

A Houdini locking system is built into every Soloc Buckle. This feature allows the unit to be locked so that the user cannot open it themselves, if required.

The buckle can be locked by inserting a screw underneath the logo sticker - this prevents the release button or pull tab from being pulled.

To release a user from their belt, a Houdini Release Cover can be placed over the buckle. The Houdini release cover uses carefully placed magnets that release the internal locking mechanism. This method is more secure than other examples of locking mechanisms, such as covers, and prevents locking mechanism tampering or release with tools that are not the intended release tool.

Please ensure that the Houdini release cover is kept nearby in case of an emergency. A suitable location might be attached to the back of the user's wheelchair (out of their reach) or worn by a carer or staff member.